

1

Handwritten musical notation for exercise 1, first system. The top staff begins with a treble clef and a common time signature (C). It contains four measures: the first measure has a whole note on the second line; the second measure has a whole note on the second space; the third measure has two quarter notes on the second line and second space; the fourth measure has a whole note on the second space. The bottom staff contains four measures: the first measure is a whole rest; the second measure has two quarter notes on the second line and second space; the third measure has two quarter notes on the second space and third line; the fourth measure has a whole note on the second space. The system ends with a double bar line.

2

Handwritten musical notation for exercise 2, first system. The top staff begins with a treble clef and a common time signature (C). It contains four measures: the first measure has a whole note on the second line; the second measure is a whole rest; the third measure has a whole note on the second space; the fourth measure has two quarter notes on the second line and second space. The bottom staff contains four measures: the first measure has two quarter notes on the second line and second space; the second measure is a whole rest; the third measure has two quarter notes on the second space and third line; the fourth measure has a whole note on the second space. The system ends with a double bar line.

3

Handwritten musical notation for exercise 3, first system. The top staff begins with a treble clef and a common time signature (C). It contains four measures: the first measure has two quarter notes on the second line and second space; the second measure has a quarter note on the second line followed by a quarter rest; the third measure has a whole note on the second space; the fourth measure is a whole rest. The bottom staff contains four measures: the first measure has a quarter note on the second line followed by a quarter rest; the second measure has a quarter note on the second space followed by a quarter rest; the third measure has two quarter notes on the second space and third line; the fourth measure has a quarter rest followed by a quarter note on the second space. The system ends with a double bar line.

4

Handwritten musical notation for exercise 4, first system. The top staff begins with a treble clef and a common time signature (C). It contains four measures: the first measure has a quarter note on the second line followed by a quarter rest; the second measure has a quarter rest followed by a quarter note on the second space; the third measure is a whole rest; the fourth measure has two quarter notes on the second line and second space. The bottom staff contains four measures: the first measure has a quarter rest followed by a quarter note on the second space; the second measure has a quarter rest followed by a quarter note on the second line; the third measure is a whole rest; the fourth measure has a quarter rest followed by a quarter note on the second space. The system ends with a double bar line.

5

Musical notation for exercise 5, consisting of two staves in 4/4 time. The first staff contains: a whole note, two half notes, and two pairs of eighth notes. The second staff contains: a half note, two eighth notes and a half note, a half note and two eighth notes, and a half note and two eighth notes.

6

Musical notation for exercise 6, consisting of two staves in 4/4 time. The first staff contains: a half note and two eighth notes, a half note and two eighth notes, two eighth notes and a half note, and a half note and two eighth notes. The second staff contains: two eighth notes and a half note, a half note and two eighth notes, a half note and two eighth notes, and a half note and two eighth notes.

7

Musical notation for exercise 7, consisting of two staves in 4/4 time. The first staff contains: two half notes, two eighth notes and a half note, two eighth notes and a half note, and two eighth notes and a half note. The second staff contains: two eighth notes and a half note, two eighth notes and a half note, a half note and two eighth notes, and two eighth notes and a half note.

8

Musical notation for exercise 8, consisting of two staves in 4/4 time. The first staff contains: a half note and two eighth notes, two eighth notes and a half note, two eighth notes and a half note, and two eighth notes and a half note. The second staff contains: two eighth notes and a half note, two eighth notes and a half note, two eighth notes and a half note, and two eighth notes and a half note.

9

Musical notation for exercise 9, measures 1-4. The piece is in 4/4 time. The first staff contains a whole note, two half notes, a quarter note triplet, and a quarter note with a fermata. The second staff contains a whole rest, two half notes, a quarter note with a fermata, and a quarter note with a fermata. The third staff contains a quarter note triplet, two quarter notes, a quarter note triplet, and a quarter note. The piece ends with a double bar line.

10

Musical notation for exercise 10, measures 1-4. The piece is in 4/4 time. The first staff contains a quarter note with a slur, two quarter notes, a dotted half note, and a quarter note with a slur. The second staff contains a quarter note triplet, a quarter note with a fermata, a quarter note with a slur, and a quarter note with a slur. The third staff contains a quarter note triplet, a dotted half note, a quarter note triplet, and a quarter note. The piece ends with a double bar line.

11

Musical notation for exercise 11, measures 1-4. The piece is in 4/4 time. The first staff contains a quarter note, a quarter note with a slur, a quarter note triplet, a quarter note with a slur, a quarter note triplet, and a dotted half note. The second staff contains a quarter note, a quarter note, a quarter note with a fermata, a quarter note triplet, and a quarter note with a slur. The third staff contains a quarter note triplet, a quarter note with a slur, a quarter note, a quarter note with a fermata, a quarter note triplet, and a quarter note. The piece ends with a double bar line.

12

Exercise 12 consists of two staves of music in 3/4 time. The first staff begins with a treble clef and a key signature of one sharp (F#). The melody starts with a quarter note, followed by a quarter note with a fermata, and continues with a sequence of quarter notes and quarter notes with fermatas. The second staff provides a bass line with quarter notes, quarter notes with fermatas, and a half note with a fermata.

13

Exercise 13 consists of two staves of music in 3/4 time. The first staff begins with a treble clef and a key signature of one sharp (F#). The melody features quarter notes, quarter notes with fermatas, and quarter notes with slurs. The second staff provides a bass line with quarter notes, quarter notes with fermatas, and quarter notes with slurs.

14

Exercise 14 consists of two staves of music in 3/4 time. The first staff begins with a treble clef and a key signature of one sharp (F#). The melody starts with a half note with a slur, followed by a dotted quarter note, and continues with quarter notes and quarter notes with slurs. The second staff provides a bass line with quarter notes with slurs, quarter notes with slurs, and quarter notes with slurs.

15

Exercise 15 consists of two staves of music in 3/4 time. The first staff begins with a treble clef and a key signature of one sharp (F#). The melody features quarter notes with slurs, quarter notes with slurs, and quarter notes with slurs. The second staff provides a bass line with a dotted quarter note, quarter notes with slurs, and quarter notes with slurs.

16

Handwritten musical notation for exercise 16, consisting of two staves in 2/4 time. The first staff contains a half note followed by two eighth notes, a half note, and two eighth notes. The second staff contains two eighth notes with a slur, a quarter note with a slur, a quarter note with a slur, and a half note.

17

Handwritten musical notation for exercise 17, consisting of two staves in 2/4 time. The first staff contains two eighth notes, a quarter note with a slur, a half note, and a quarter note with a slur. The second staff contains a whole rest, two eighth notes, a quarter note with a slur, and a quarter note with a slur.

18

Handwritten musical notation for exercise 18, consisting of two staves in 2/4 time. The first staff contains a quarter note with a slur, a quarter note with a slur, a half note, and two eighth notes. The second staff contains a quarter note with a slur, a quarter note with a slur, a whole rest, and a quarter note with a slur.

19

Handwritten musical notation for exercise 19, consisting of two staves in 2/4 time. The first staff contains two eighth notes, a whole rest, a quarter note with a slur, and a quarter note with a slur. The second staff contains a whole rest, a quarter note with a slur, a whole rest, and two eighth notes.

20

Handwritten musical notation for exercise 20, consisting of three staves in 4/4 time. The notation includes various rhythmic values such as quarter notes, eighth notes, and dotted notes, along with slurs and accents. The first staff begins with a treble clef and a 4/4 time signature. The piece concludes with a double bar line.

21

Handwritten musical notation for exercise 21, consisting of three staves in 3/4 time. The notation includes various rhythmic values such as quarter notes, eighth notes, and dotted notes, along with slurs and accents. The first staff begins with a treble clef and a 3/4 time signature. The piece concludes with a double bar line.

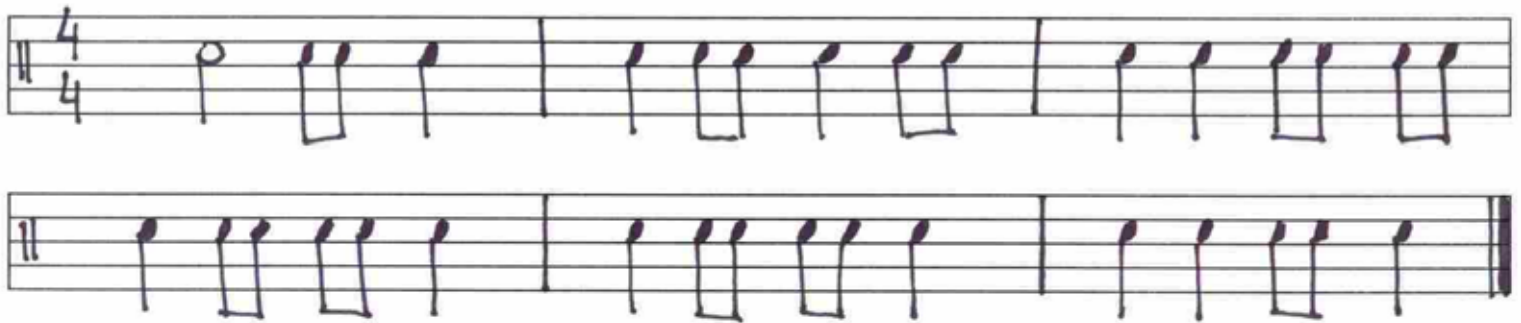
22

Handwritten musical notation for exercise 22, consisting of two staves in 2/4 time. The notation includes various rhythmic values such as quarter notes, eighth notes, and dotted notes, along with slurs and accents. The first staff begins with a treble clef and a 2/4 time signature. The piece concludes with a double bar line.

23



24



25



26



27

Handwritten musical notation for exercise 27, consisting of three staves in common time (C). The notation includes various rhythmic patterns such as eighth and sixteenth notes, rests, and slurs. The first staff begins with a treble clef and a common time signature. The second and third staves continue the piece with similar rhythmic motifs and phrasing.

28

Handwritten musical notation for exercise 28, consisting of three staves in common time (C). The notation includes various rhythmic patterns such as eighth and sixteenth notes, rests, and slurs. The first staff begins with a treble clef and a common time signature. The second and third staves continue the piece with similar rhythmic motifs and phrasing.

29

Handwritten musical notation for exercise 29, consisting of two staves in common time (C). The notation includes various rhythmic patterns such as eighth and sixteenth notes, rests, and slurs. The first staff begins with a treble clef and a common time signature. The second staff continues the piece with similar rhythmic motifs and phrasing.

# 30

Handwritten musical notation for exercise 30, consisting of three staves in common time (C). The notation includes various rhythmic values such as quarter notes, eighth notes, and dotted notes, along with rests and slurs.

# 31

Handwritten musical notation for exercise 31, consisting of three staves in common time (C). The notation includes various rhythmic values such as quarter notes, eighth notes, and dotted notes, along with rests and slurs.

# 32

Handwritten musical notation for exercise 32, consisting of two staves in 3/4 time. The notation includes various rhythmic values such as quarter notes, eighth notes, and dotted notes, along with rests and slurs.

33

Handwritten musical score for exercise 33, consisting of three staves in common time (C). The notation includes various rhythmic values such as eighth and sixteenth notes, rests, and beams. The first staff begins with a treble clef and a common time signature. The second and third staves begin with a double bar line and a repeat sign. The piece concludes with a double bar line and repeat sign at the end of the third staff.

34

Handwritten musical score for exercise 34, consisting of three staves in common time (C). The notation includes various rhythmic values such as eighth and sixteenth notes, rests, and beams. The first staff begins with a treble clef and a common time signature. The second and third staves begin with a double bar line and a repeat sign. The piece concludes with a double bar line and repeat sign at the end of the third staff.

35

Handwritten musical score for exercise 35, consisting of three staves in common time (C). The notation includes various rhythmic values such as eighth and sixteenth notes, rests, and beams. The first staff begins with a treble clef and a common time signature. The second and third staves begin with a double bar line and a repeat sign. The piece concludes with a double bar line and repeat sign at the end of the third staff.

36

Handwritten musical notation for exercise 36. The piece is in common time (C). It consists of three staves. The first staff begins with a common time signature and contains four measures of music, each featuring a triplet of eighth notes. The second staff contains four measures, also featuring triplets of eighth notes. The third staff contains four measures, continuing the triplet pattern. The notation includes various rhythmic markings such as slurs and accents.

37

Handwritten musical notation for exercise 37. The piece is in 4/4 time. It consists of three staves. The first staff begins with a 4/4 time signature and contains four measures of music, each featuring a triplet of eighth notes. The second staff contains four measures, also featuring triplets of eighth notes. The third staff contains four measures, continuing the triplet pattern. The notation includes various rhythmic markings such as slurs and accents.

38

Handwritten musical notation for exercise 38. The piece is in 2/4 time. It consists of three staves. The first staff begins with a 2/4 time signature and contains four measures of music, each featuring a triplet of eighth notes. The second staff contains four measures, also featuring triplets of eighth notes. The third staff contains four measures, continuing the triplet pattern. The notation includes various rhythmic markings such as slurs and accents.