

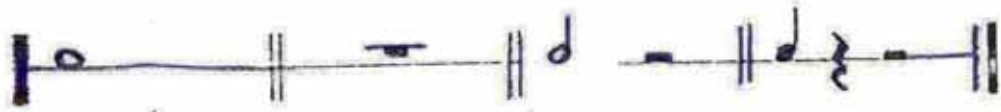


GUIA PRÁCTICA
PARA LAS EVALUACIONES
DE SOLFEO Y RITMICA

NIVEL

1-B

Fórmula Rítmica



1 2 3

4 5 6

7 8 9

10 11 12

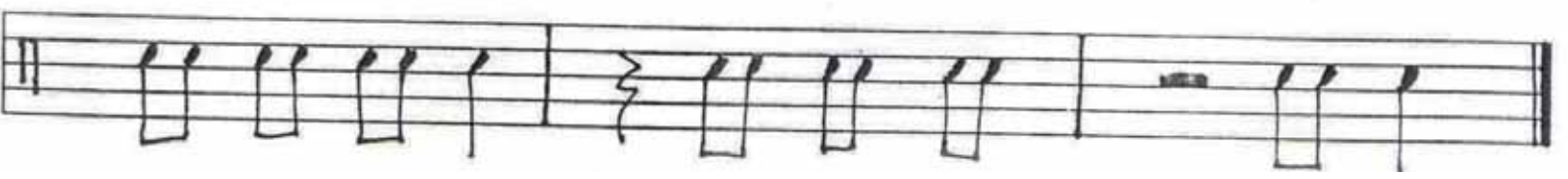
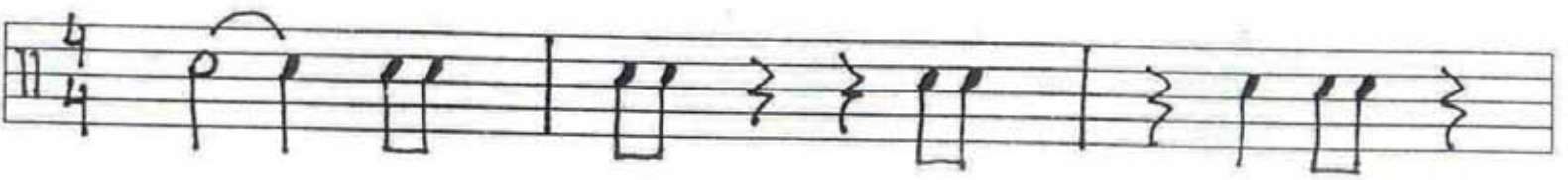
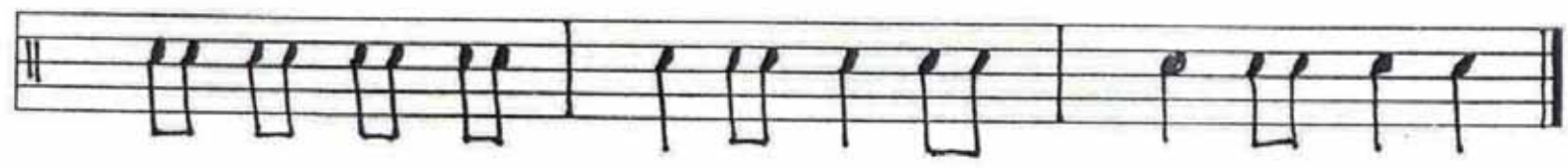
13 14 15

16 17 18

19 20 21

22 23 24

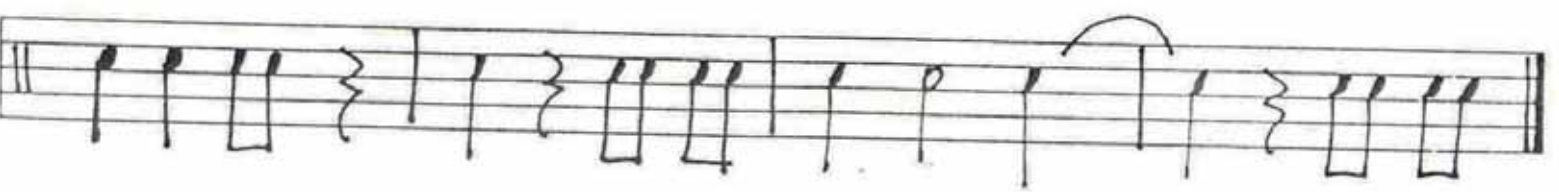
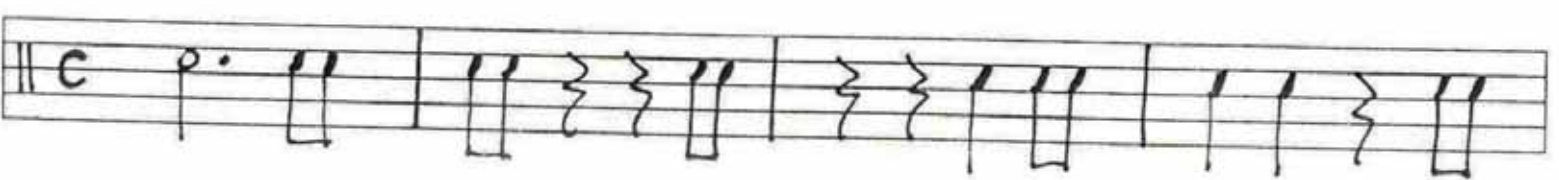
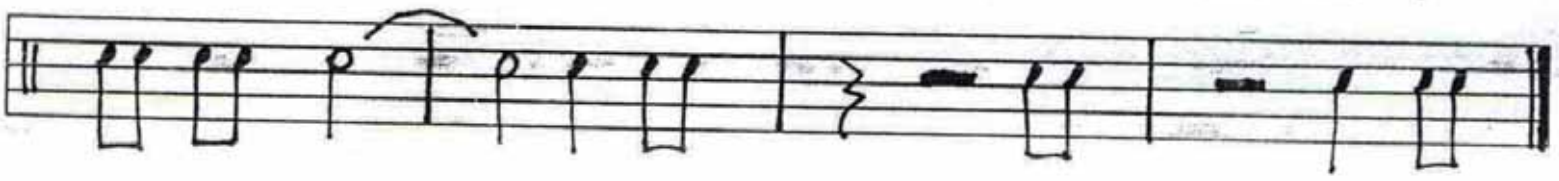
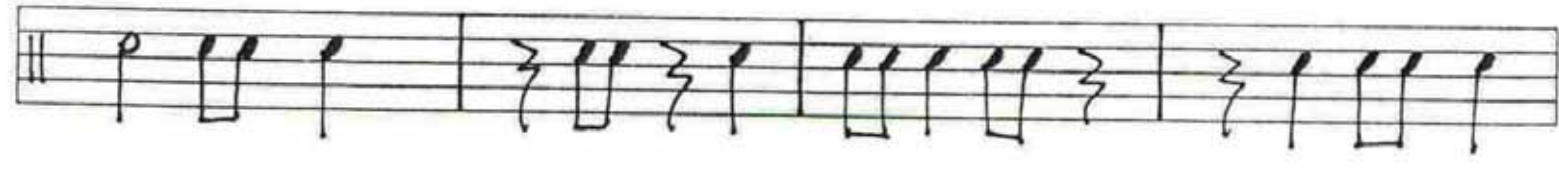
7



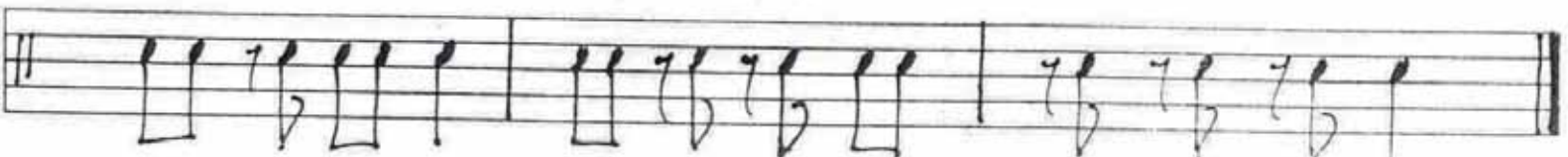
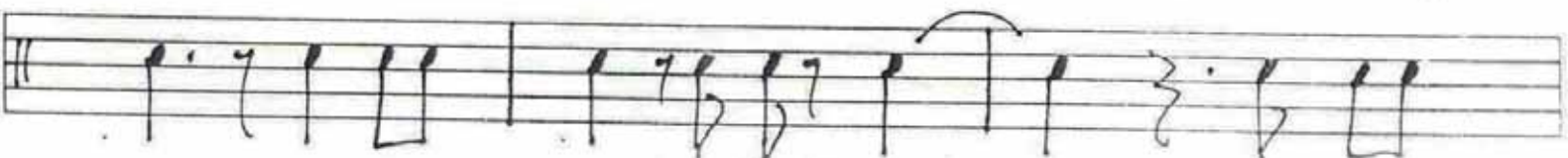
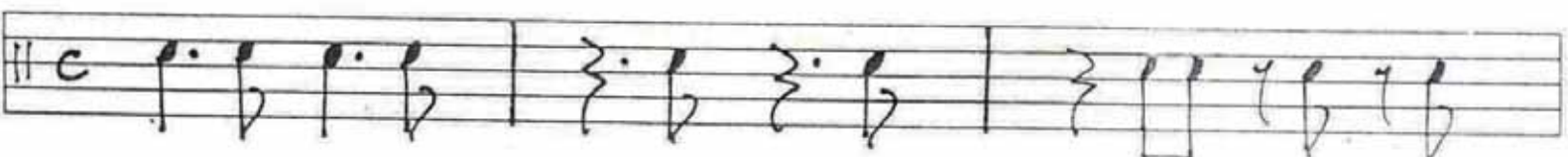
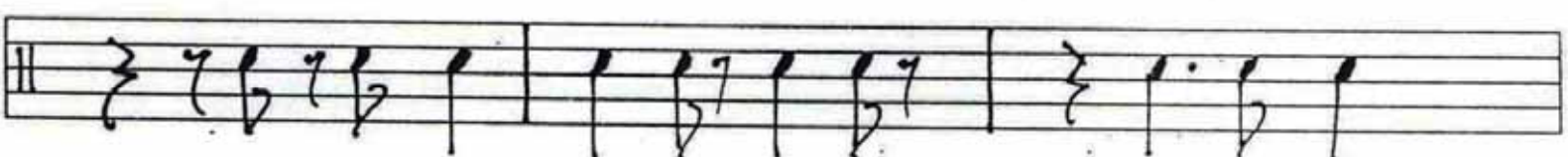
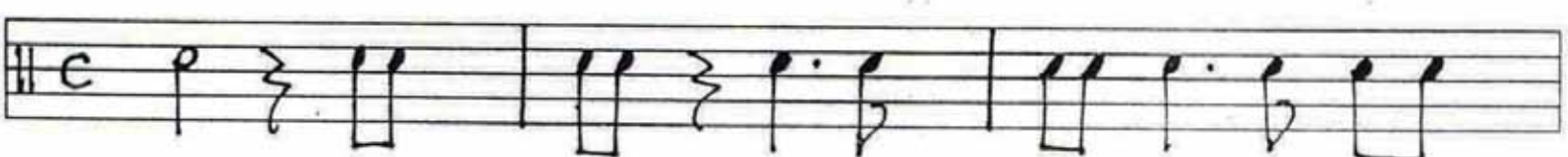
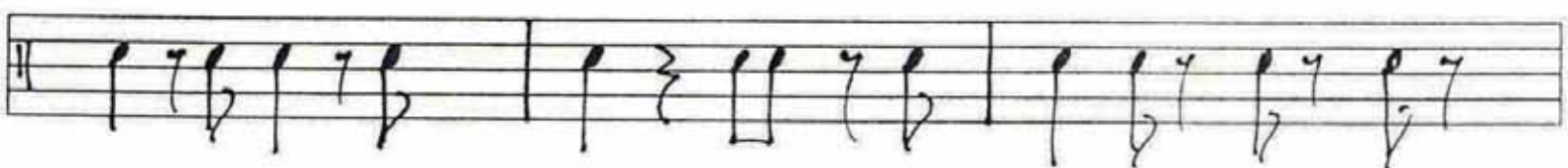
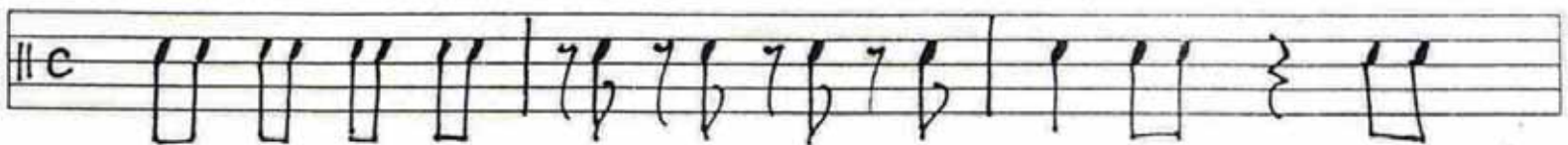
1 2 3 4 5 6 7 8 9 10
1 2 3 4 5 6 7 8 9 10

1 2 3 4 5 6 7 8 9 10 11 12
13 14 15 16 17 18 19 20

1 2 3 4 5 6 7 8 9 10 11 12 13 14 15



This page contains ten staves of handwritten musical notation for guitar. The notation includes various rhythmic values such as quarter, eighth, and sixteenth notes, as well as rests and accidentals. The time signatures are common time (C), 3/4, and 3/4 with a 3 over the first measure. The music is written in a style typical of guitar tablature or lead sheets, with a focus on rhythmic patterns and melodic lines.

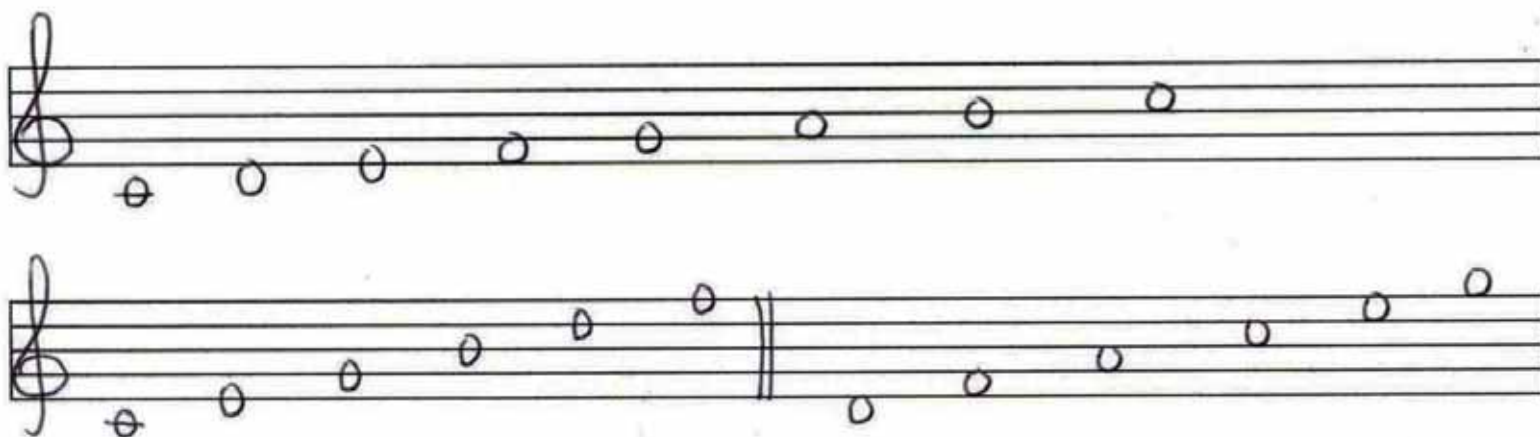


Handwritten musical notation for the first system, consisting of three staves. The first staff begins with a treble clef and a common time signature (C). The music features a sequence of eighth notes, with several groups of three notes beamed together and marked with a '3' above them, indicating triplets. The notation includes various rhythmic values and rests.

Handwritten musical notation for the second system, consisting of three staves. The first staff begins with a treble clef and a 4/4 time signature. The music continues with eighth notes and triplet markings. The notation is dense with rhythmic patterns and rests.

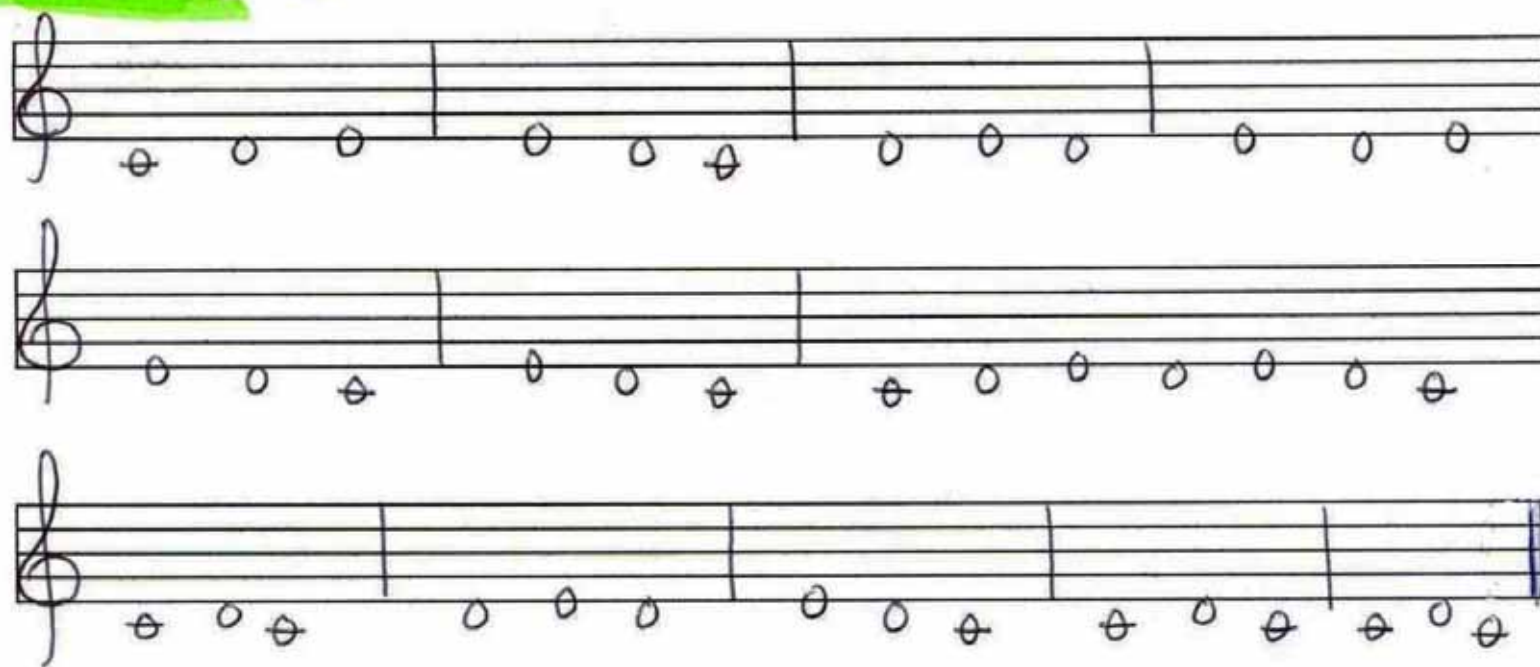
Handwritten musical notation for the third system, consisting of three staves. The first staff begins with a treble clef and a 2/4 time signature. The music features eighth notes and triplet markings. The notation includes rests and concludes with a double bar line.

Primeramente debemos recordar el nombre de las líneas y espacio en clave de SOL

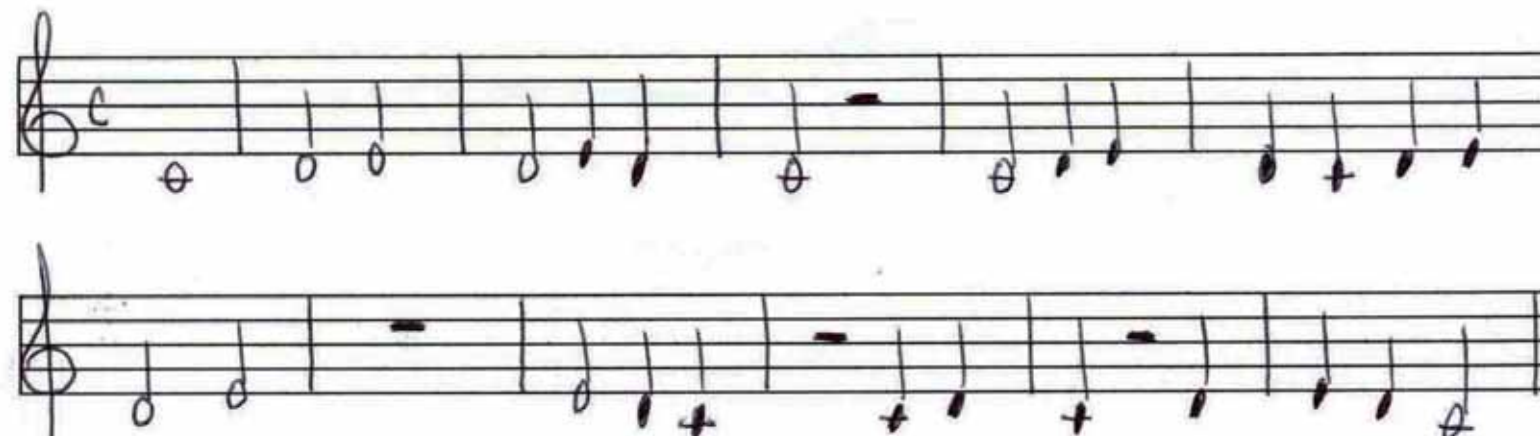


ENTONACION

1



EJERCICIO



Ejercicio

Handwritten musical notation for three staves in common time (C). The first staff contains a sequence of notes: C4, D4, E4, F4, G4, A4, B4, C5, D5, E5, F5, G5, A5, B5, C6, D6, E6, F6, G6, A6, B6, C7, D7, E7, F7, G7, A7, B7, C8, D8, E8, F8, G8, A8, B8, C9. The second staff contains notes: C4, D4, E4, F4, G4, A4, B4, C5, D5, E5, F5, G5, A5, B5, C6, D6, E6, F6, G6, A6, B6, C7, D7, E7, F7, G7, A7, B7, C8, D8, E8, F8, G8, A8, B8, C9. The third staff contains notes: C4, D4, E4, F4, G4, A4, B4, C5, D5, E5, F5, G5, A5, B5, C6, D6, E6, F6, G6, A6, B6, C7, D7, E7, F7, G7, A7, B7, C8, D8, E8, F8, G8, A8, B8, C9.

Ejercicio

Handwritten musical notation for two staves in 3/4 time. The first staff contains notes: C4, D4, E4, F4, G4, A4, B4, C5, D5, E5, F5, G5, A5, B5, C6, D6, E6, F6, G6, A6, B6, C7, D7, E7, F7, G7, A7, B7, C8, D8, E8, F8, G8, A8, B8, C9. The second staff contains notes: C4, D4, E4, F4, G4, A4, B4, C5, D5, E5, F5, G5, A5, B5, C6, D6, E6, F6, G6, A6, B6, C7, D7, E7, F7, G7, A7, B7, C8, D8, E8, F8, G8, A8, B8, C9.

EJERCICIO

Handwritten musical notation for two staves in 2/4 time. The first staff contains notes: C4, D4, E4, F4, G4, A4, B4, C5, D5, E5, F5, G5, A5, B5, C6, D6, E6, F6, G6, A6, B6, C7, D7, E7, F7, G7, A7, B7, C8, D8, E8, F8, G8, A8, B8, C9. The second staff contains notes: C4, D4, E4, F4, G4, A4, B4, C5, D5, E5, F5, G5, A5, B5, C6, D6, E6, F6, G6, A6, B6, C7, D7, E7, F7, G7, A7, B7, C8, D8, E8, F8, G8, A8, B8, C9.

ENTONACION

3

Two staves of musical notation for an intonation exercise. The first staff contains three measures of music with notes on a treble clef staff. The second staff contains four measures of music with notes on a treble clef staff.

Ejercicio

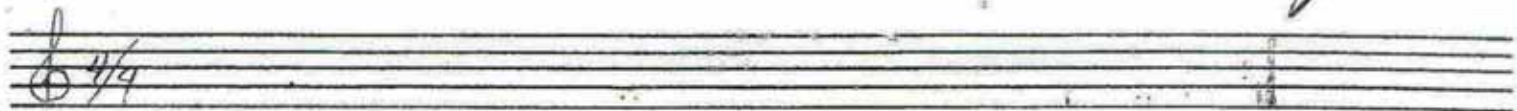
Two staves of musical notation for an exercise. The first staff is in common time (C) and contains eight measures of music with eighth notes. The second staff contains eight measures of music with eighth notes and rests.

Ejercicio

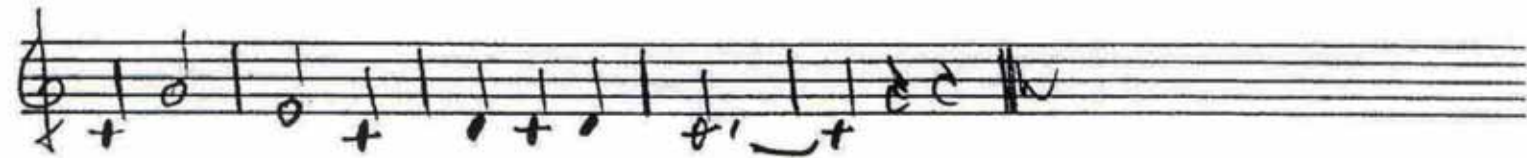
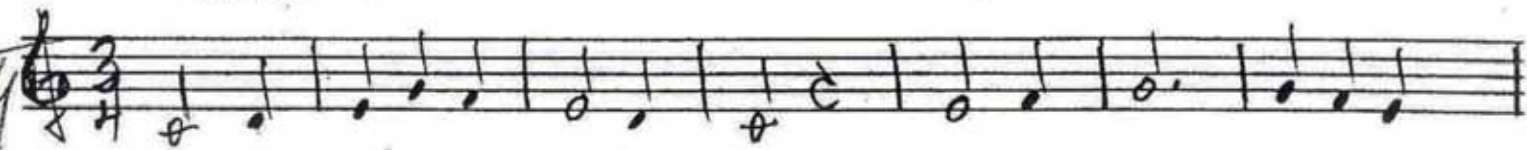
Two staves of musical notation for an exercise in 3/4 time. The first staff contains eight measures of music with eighth notes. The second staff contains eight measures of music with eighth notes and rests.

Ejercicio

Two staves of musical notation for an exercise in 2/4 time. The first staff contains eight measures of music with eighth notes and a rest. The second staff contains eight measures of music with eighth notes and rests.

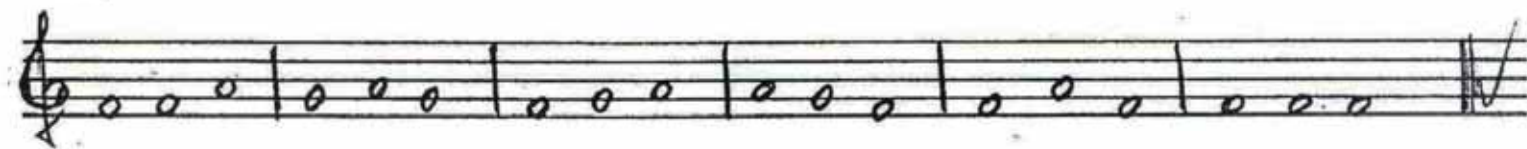
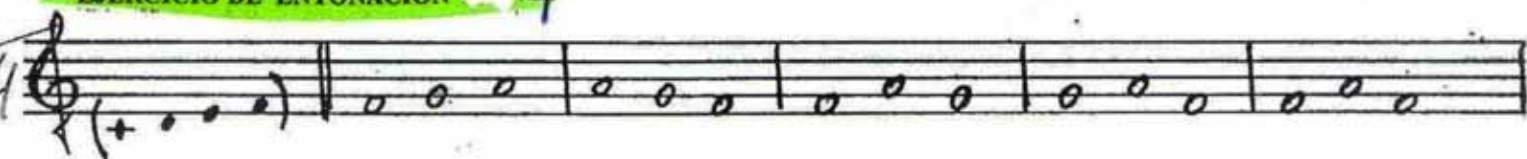


LECCIÓN

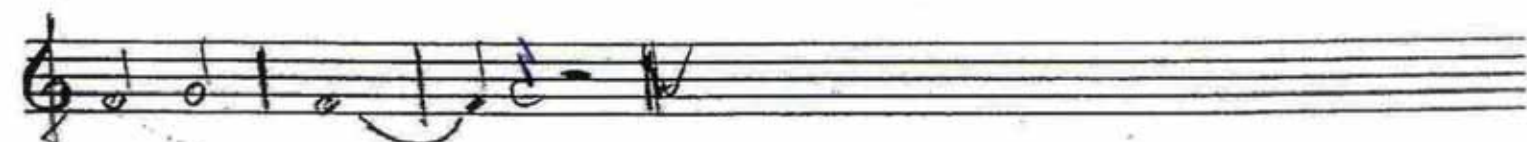


EJERCICIO DE ENTONACIÓN

4



LECCIÓN



LECCIÓN

Three staves of musical notation in treble clef, 3/4 time signature. The first staff begins with a treble clef and a 3/4 time signature. The music consists of a sequence of notes: quarter notes, eighth notes, and sixteenth notes, with some notes beamed together. The second and third staves continue the melodic line with similar rhythmic patterns.

EJERCICIO RITMICO

Four staves of rhythmic exercise notation in treble clef, 2/4 time signature. The notation focuses on rhythmic patterns using stems and beams, with some notes marked with accents. The first staff shows a sequence of eighth notes and quarter notes. The second and third staves feature more complex rhythmic patterns, including eighth notes and quarter notes with accents. The fourth staff concludes the exercise with a final rhythmic pattern and a double bar line.

EJERCICIO RITMICO N° 6

Two staves of rhythmic exercise notation in treble clef, 2/4 time signature. The first staff begins with a treble clef and a 2/4 time signature. The notation includes quarter notes, eighth notes, and sixteenth notes, with some notes marked with accents. The second staff continues the rhythmic exercise with similar patterns and accents.

EJERCICIO RITMICO

EJERCICIO DE ENTONACIÓN 5

LECCIÓN

LECCIÓN 17

Musical notation for Lesson 17, consisting of four staves of music in 2/4 time. The first staff begins with a treble clef and a 2/4 time signature. The music features a sequence of eighth and sixteenth notes, with some rests. The second and third staves continue the melodic line with similar rhythmic patterns. The fourth staff concludes the exercise with a double bar line.

EJERCICIO DE ENTONACIÓN

6

Musical notation for Exercise 6, consisting of two staves of music in 2/4 time. The first staff begins with a treble clef and a 2/4 time signature. The exercise consists of a series of whole notes, with each note held for the duration of the measure. The second staff continues the exercise with more whole notes, ending with a double bar line.

LECCIÓN 18

Musical notation for Lesson 18, consisting of three staves of music in 2/4 time. The first staff begins with a treble clef and a 2/4 time signature. The music features a sequence of eighth and sixteenth notes, with some rests. The second and third staves continue the melodic line with similar rhythmic patterns. The third staff concludes the exercise with a double bar line.

CLAVE DE FA

Juan Holase
Escuela de Música

A single staff of music with a treble clef. It contains a sequence of notes: G4, A4, B4, C5, D5, E5, F5, G5, A5, B5, C6, D6, E6, F6, G6, A6, B6, C7. The notes are mostly whole notes, with some half notes at the end.

A single staff of music with a treble clef. It contains a sequence of notes: G4, A4, B4, C5, D5, E5, F5, G5, A5, B5, C6, D6, E6, F6, G6, A6, B6, C7. The notes are mostly whole notes, with some half notes at the end.

A single staff of music with a treble clef. It contains a sequence of notes: G4, A4, B4, C5, D5, E5, F5, G5, A5, B5, C6, D6, E6, F6, G6, A6, B6, C7. The notes are mostly whole notes, with some half notes at the end.

A single staff of music with a treble clef. It contains a sequence of notes: G4, A4, B4, C5, D5, E5, F5, G5, A5, B5, C6, D6, E6, F6, G6, A6, B6, C7. The notes are mostly whole notes, with some half notes at the end.

Two empty musical staves.

ENTONACIÓN

A single staff of music with a treble clef. It contains a sequence of notes: G4, A4, B4, C5, D5, E5, F5, G5, A5, B5, C6, D6, E6, F6, G6, A6, B6, C7. The notes are mostly whole notes, with some half notes at the end.

A single staff of music with a treble clef. It contains a sequence of notes: G4, A4, B4, C5, D5, E5, F5, G5, A5, B5, C6, D6, E6, F6, G6, A6, B6, C7. The notes are mostly whole notes, with some half notes at the end.

A single staff of music with a treble clef. It contains a sequence of notes: G4, A4, B4, C5, D5, E5, F5, G5, A5, B5, C6, D6, E6, F6, G6, A6, B6, C7. The notes are mostly whole notes, with some half notes at the end.

A single staff of music with a treble clef. It contains a sequence of notes: G4, A4, B4, C5, D5, E5, F5, G5, A5, B5, C6, D6, E6, F6, G6, A6, B6, C7. The notes are mostly whole notes, with some half notes at the end.

Two empty musical staves.

1

Handwritten musical notation for the first system, consisting of two staves. The first staff contains a sequence of notes: G2, A2, B2, C3, D3, E3, F3, G3, A3, B3, C4, D4, E4, F4, G4. The second staff contains notes: G3, A3, B3, C4, D4, E4, F4, G4, A4, B4, C5, D5, E5, F5, G5.

2

Handwritten musical notation for the second system, consisting of two staves. The first staff contains notes: G3, A3, B3, C4, D4, E4, F4, G4, A4, B4, C5, D5, E5, F5, G5. The second staff contains notes: G3, A3, B3, C4, D4, E4, F4, G4, A4, B4, C5, D5, E5, F5, G5.

3

Handwritten musical notation for the third system, consisting of two staves. The first staff contains notes: G3, A3, B3, C4, D4, E4, F4, G4, A4, B4, C5, D5, E5, F5, G5. The second staff contains notes: G3, A3, B3, C4, D4, E4, F4, G4, A4, B4, C5, D5, E5, F5, G5.

Handwritten musical notation for the fourth system, consisting of two empty staves with a treble clef and a 2/4 time signature.

Handwritten musical notation for the fifth system, consisting of two empty staves with a treble clef.